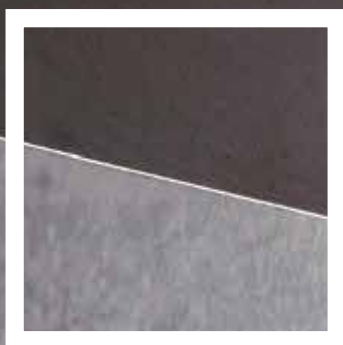


Frameless
Flush
Shadowgap
Solutions



By
THEINVISIBLETOOLBOX.ca
SOUND PRINCIPLES FOR MINIMAL CONSTRUCTION



Stylish aesthetics
for design-oriented

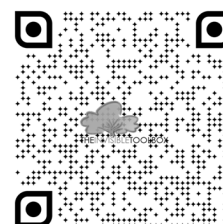
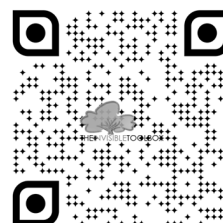
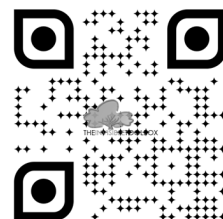
Flush skirting boards
The revolutionary idea for your
living and work space!



For service in Canada
please visit:

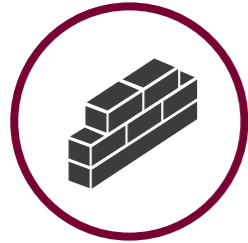


THEINVISIBLETOOLBOX.ca

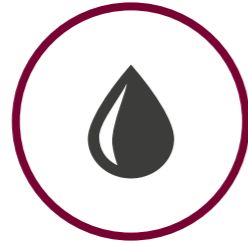


The innovative building technique for superior standards

Functional fitting due to a unique plug system



The flush skirting meets plain, timeless elegance with comfort and modern well-being in your own home. Suitable for solid and dry construction.



Annoying dusting of the skirting board upper edge and thus also the resulting wiping marks on the walls belong to the past.



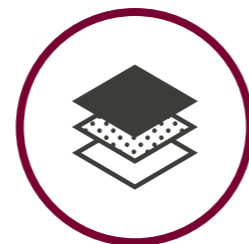
Since there is no direct contact between floor, skirting and brickwork, there will be no floor vibrations transmitted.



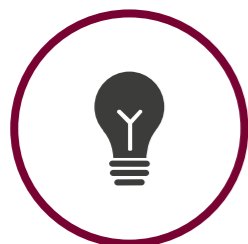
Quick and easy assembly through the patented plug-system with corresponding corner and linear connectors. This eliminates the need for time-consuming mitre cut.



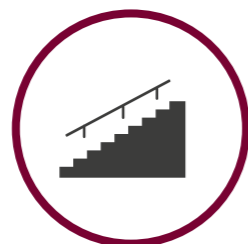
The skirting profile is applied directly to the raw brickwork before the plasterwork. The top edge conducts as a guideline for the vertical and horizontal armor. That simplifies the plasterwork and saves valuable time when setting the edges.



New standards in material selection:
from the classic wooden types up to aluminium and stainless steel, dirt-repellent surfaces, Corian, Carbon and many more.



Indirect lighting with LED stripes in the skirting boards allow new design of the possibilities in the lighting engineering.



Also possible to use the skirting boards for steps, landings, stairs and curves.
Simple but perfect.



it is so easy:
- cut the profiles to size
- attach corner pieces
- mounting adhesive on rear side spread over the entire surface
- align with height
- fix
- before laying the floor covering Remove protective film
- insert skirting board
- thats it!



**Harmonious perfection
clear lines**



Visible skirting boards for Light model

<p>WHITE RAL 9010/RAL9016 Art.no. 40080</p>	
<p>ALUMINIUM-LAMINATE Art.no. 40500</p>	
<p>STAINLESS STEEL-LAMINATE Art.no. 40510</p>	
<p>Further solid wood slats in oak, walnut and many more.</p>	

PRODUCT RANGE

Aluminium profile for wooden skirting boards

MASONRY		DRYWALL	
<p>PROFILE LIGHT 46 length: 2m height: 46mm depth: 15mm max. material depth: 9,7mm Art.no. 10046</p>		<p>PROFILE LIGHT 46 length: 2m height: 46+25mm depth: 15 bzw. 13,5mm max. material depth: 9,7mm Art.no. 10045</p>	
<p>PROFILE LIGHT 60 length: 2m height: 60mm depth: 15mm max. material depth: 9,7mm Art.no. 10061</p>		<p>PROFILE LIGHT 60 length: 2m height: 60+25mm depth: 15 bzw. 13,5mm max. material depth: 9,7mm Art.no. 10060</p>	
<p>PROFILE LIGHT 80 length: 2m height: 80mm depth: 15mm max. material depth: 9,7mm Art.no. 10080</p>		<p>PROFILE LIGHT 45 ASR length: 2m height: 60/80mm depth: 17mm max. material depth: 16mm Art.no. 10045ASR</p>	

Aluminium profile for tiles/clinker/natural stones

<p>PROFILE C70 length: 2m height: 70mm depth: 15mm max. material depth: 12mm Art.no. 10171</p>		<p>PROFILE C70 length: 2m height: 70+25mm depth: 15 bzw. 13,2mm max. material depth: 12mm Art.no. 10170</p>	
---	--	--	--

Accessories

<p>INNER CORNER PROFILE FOR MODEL LIGHT 46 Art.no. 11046 FOR MODEL LIGHT 60+80 Art.no. 11060 FOR MODEL C70 Art.no. 11070</p>		<p>CONNECTING STRAP FOR MODEL LIGHT + ASR Art.no. 13000 FOR MODEL C70 + Z Art.no. 13002</p>	
<p>EXTERNAL CORNER PROFILE FOR MODEL LIGHT 46 Art.no. 12046 FOR MODEL LIGHT 60+80 Art.no. 12060 FOR MODEL C70 Art.no. 12070</p>		<p>MODEL VARIABLE LIGHT + ASR Art.no. 13004 MODEL VARIABLE C70 Art.no. 13005</p>	
<p>CONNECTING STRAP FOR STEPS FOR MODEL LIGHT + ASR Art.no. 13001 FOR MODEL C70 Art.no. 13003</p>			
<p>MOUNTING GLUE Art.no. 50010</p>	Mounting foam free of CFC, PFC and HFC - green PU-Line		



High living comfort
for demanding

**FLUSH SKIRTING
BOARDS**

„Architecture means the art of designing spaces, taking into account the harmonious interplay of all components. The flush-mounted skirting board designs each room, radiates relaxation and elegance and reflects living quality.“

PRODUCT RANGE

Aluminium profile for drywall Z model

PVC PROFILE Z10 for gypsum plasterboard 10 mm

length: 2,30m
height: 61mm
depth: 10mm
max. material depth: 5,5mm

Art.no. 10090

PVC PROFILE Z12 for gypsum plasterboard 12,5mm

Length: 2,30m
height: 58mm
depth: 12,5mm
max. material depth: 8mm

Art.no. 10091

PVC PROFILE Z15 for gypsum plasterboard 15mm

Length: 2,30m
height: 56mm
depth: 15mm
max. material depth: 10,5mm

Art.no. 10092

PVC PROFILE Z16 – for 5/8" Gypsm board

Length: 2,30m
height: 55mm
depth: 16mm
max. material depth: 11,5mm

Art.no. 10093



Art.nr. 10090



Art.nr. 10091



Art.nr. 10092



Art.nr. 10093



Aluminium skirting board for Z model

SKIRTING BOARD RAL 9010 (powder coating)

Art.no. 40100/40101/40102/40103

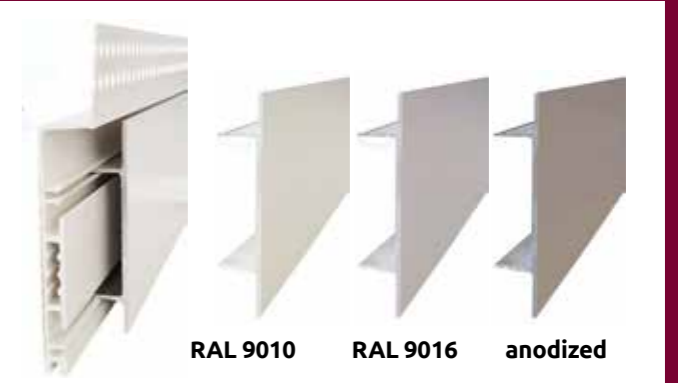
SKIRTING BOARD RAL 9016 (powder coating)

Art.no. 40110/40111/40112/40113

SKIRTING BOARD ANODIZED

Art.no. 40120/40121/40122/40123

More on request



RAL 9010

RAL 9016

anodized



Rustic meets modern



> **Minimal** > **Aesthetic** > **Hygienic** > **Functional** > **Easy to assemble**

More information, sectional drawings as DWG or PDF file are available on our website www.ags-systems.com

AGS-SYSTEMS SRL

Stava 47/B | I-39025 Naturno (BZ)
Ph. +39 0473 666376
Fax +39 0473 420390
info@ags-systems.com
www.ags-systems.com

Trading partner:

THEINVISIBLETOOLBOX.CA

Ph:647.500.4103.
INFO@THEINVISIBLETOOLBOX.CA
36 ALBERTA AVE, TORONTO.
ONTARIO.CANADA M6H-2R6

Follow us on

